

RELIEF VALVE (H.P.) TYPE: RL50

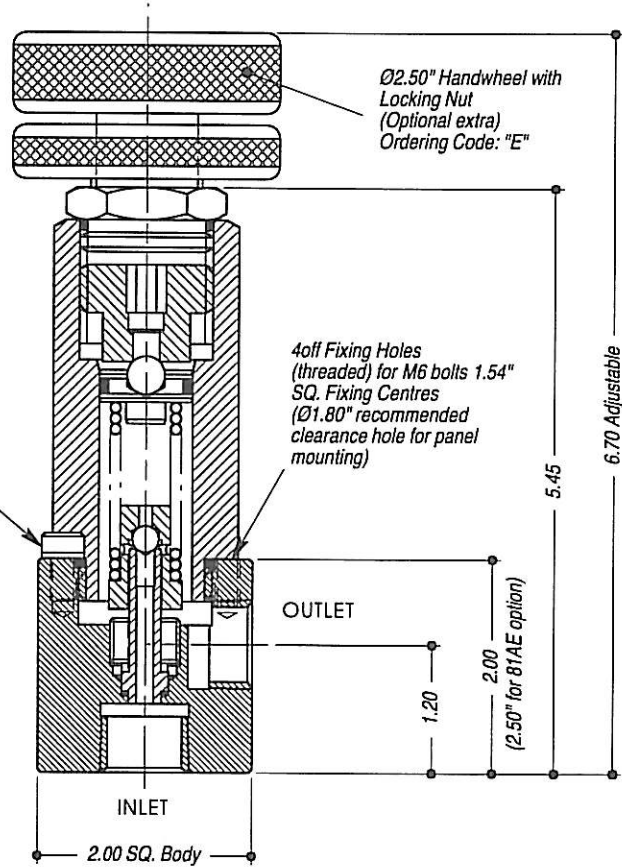


Valves Ltd

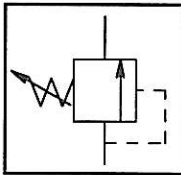
- PRESSURE EQUIPMENT DIRECTIVE (PED) 97/23/EC APPROVED.
- STAINLESS STEEL (316 / 1.4404)
- SUITABLE FOR LIQUID USE.
- ALL DIMENSIONS IN INCHES

- Leaktight when 90% of "set pressure" is applied.
- Repeatability $\pm 5\%$ of "set pressure".
- Re-seating within 20% of "cracking pressure". (Pre-set cracking pressure is optional) State details when ordering.
- Recommended MAXIMUM back pressure 1,000 psi. (70 Bar).

Locking Screw and Washer
(can be removed when
mounting valve to a panel)



Circuit Symbol



TECHNICAL SPECIFICATION		ORDERING EXAMPLE
Valve Type:	RL50	
Porting / Connection Options: (*AE threads fitted only to the INLET port)	P = BSP (Parallel) N = NPT (Taper) 56AE (3/8" O.D. Tube) 81AE (9/16" O.D. Tube)	N
Autoclave Outlet Port Options:	50N (1/2" NPT)	---
Valve Options:	E = Handwheel (external) Adjustment	---
Working Media: (standard)	Oil / Water Glycol Duty (no ordering code req'd)	---
Working Media: (options)	WD = Water Duty SWD = Sea Water Duty	---
Press. Range:	260 - 1.6K psi, 1 - 5K psi 4K - 15K psi Max W.P.	5K
Orifice Size:	Ø6.0mm Ø4.1mm	
Port Size:	1/2"	
Valve Seat Mat'l: (standard)	Stainless Steel - 440C (liquid use)	
Valve Seat Mat'l: (options)	1.4542 St.Steel - Water Duty Inconel - Sea Water Duty	
Seal Material:	Viton (other materials available by request)	
Dry Weight: (kg)	1.75	
Working Temperature Range:	-10°C to +120°C	
Flow Rate:	Contact factory for details	

Technical Specification Notes:-

* Other materials available (Monel, Inconel, Hastelloy) subject to PED approval.