

## BOURDON TUBE PRESSURE GAUGE PREMIUM INDUSTRIAL SERVICE



An impressive technical specification and wide range of standard features make the PREMIUM the obvious choice for a wide range of process and engineering applications.

Primarily designed for the harshest of offshore Oil & Gas environments. PREMIUM provides a very cost effective solution to the process industry and therefore is the ideal 'standard' choice for companies looking to benefit from a stock and range rationalisation.

Meeting all the current National and International specifications and regulatory standards including EN 837, PED etc. PREMIUM with its inherently safety pattern construction incorporates many features as standard that are designed to provide full protection to the instrument and the operator.



### Size

100 mm (4") & 150mm (6")

### Mounting

Direct, Surface and Flush

### Case & Bezel

Rugged one-piece full Safety Pattern case to S3 standard with a solid baffle partition wall and full blow out back manufactured in 1.6mm thick, 316L stainless steel.

### Scale Ranges

0 to 600 mbar to 0 to 1400 bar Pressure  
Equivalent units of pressure / vacuum available  
Single and dual scales are available

### Pressure Element

≤80 Bar – Monel Bourdon Tube  
≥81 Bar - Monel Coil

### Overload

Units withstands overload pressure up to 130% of FSD  
Overload & vacuum stops are fitted on the movement

Option: Mechanical overload clamps fitted internally to enable units to withstand up to 3x the max scale reading

### Pressure Connection

3/8", 1/2" BSP  
1/2" NPT  
Other connections available, contact our Sales Dept for details

### Accuracy Class

CL:1 1.0% of FSD as defined in EN837-1  
Option: 0.5% of FSD as defined in EN837-1

### Temperature

Operating: -20 to +90 °C  
Storage: -40 up to +100 °C  
Options: for lower or higher operating temperatures, please contact our Sales Office

### Dial

White Anodised Aluminium marked in black finish  
Single or dual scale

### Pointer

Stainless steel coloured black  
Options: Micrometer Adjustable

### Movement

Stainless Steel Construction  
Option : Viscous Damped movement to overcome the effects of minor pressure pulsations

### Window

3mm Laminated Safety Glass (Standard)  
Option: Acrylic Plastic Window

### Environmental Rating

IP67 as defined in EN 60 529

### Traceability

All instruments are individually calibrated and have an unique Serial Number printed on the dial. A Certificate of Conformity Traceable to National Standards is Supplied Free of Charge

### Certification available

BS EN 10204 3.1B Material Certification  
Point by Point Test Certificate

### Safety

All units are manufactured to comply with EN 837-1, S3 specification and other regulatory standards including PED.

### Installation instructions

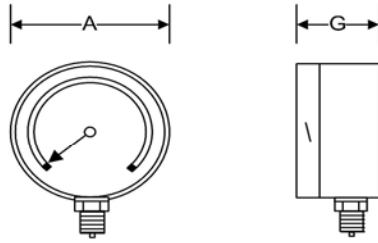
Refer to EN 837-2

### Temperature Effect

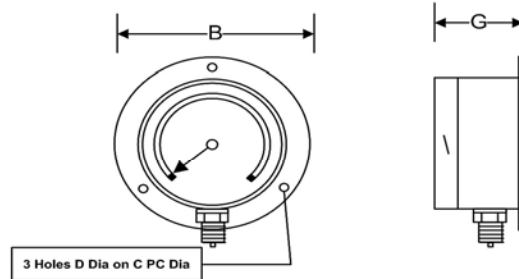
Variation in indication caused by temperature shall not exceed  $\pm 0.04 \times (t_2 - t_1)\%$  of the span where:  
t1 is the reference ambient temperature in degrees Celsius  
t2 is the ambient temperature in degrees Celsius

## Dimensions

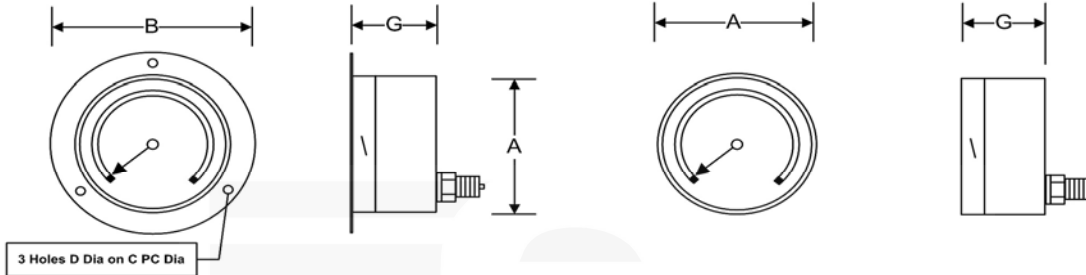
Model : 966MGP



Direct Mounting 966MGP



Surface Mounting 966FMGP



Flush Mounting 11/966MGP

Direct Mounting Rear 966MGP-DR

Model No	A	B	C	D	G	Weight
100mm 966 (Dry Case)	105mm	131mm	118mm	6mm	52mm	0.7kg
100mm 966 (Glycerine Filled)	105mm	131mm	118mm	6mm	52mm	1.1kg
150mm 966 (Dry Case)	162mm	183mm	168mm	6mm	53mm	1.34kg
150mm 966 (Glycerine Filled)	162mm	183mm	168mm	6mm	53mm	2.30kg

## Options

Case : Glycerine filled  
Mounting : Flush mounting clamp fixing available  
Element : 316L Stainless Steel  
Accuracy : 0.5% of FSD as defined in EN837-1  
Window : Acrylic Plastic Window  
Pointer : Micrometer adjustable Model 270

## Accessories

For high temperature applications such as steam, see our range of syphons and adaptors. – See separate Datasheet.

We can supply Needle, Ball or 2 Valve manifolds for the Model 966MGP – See separate Datasheet.

The manifolds in addition to allowing the instrument to operate normally allows the following: -

- Checking of gauge zero at line pressure.
- Complete isolation of the instrument.
- De-pressurisation of the instrument or controlled purging.
- Damping of pressure pulsations and surges.
- Inline calibration, allows in situation calibration

Specifications and dimensions in this leaflet, are subject to change without prior notice.

Budenberg Gauge Co Ltd  
4 Gilchrist Road. Northbank Industrial Park. Irlam. Manchester. M44 5AY.  
Tel : +44 (0)870 442 5441. Fax : +44 (0)870 787 7350.  
Email : sales@budenberg.co.uk Web: www.budenberginstruments.com