

DPI 800/802

Pressure Indicator / Loop Calibrator

The Druck DPI 800 Series is a range of rugged, highly reliable and simple to use hand held instruments.

Advanced features and technical innovation address more applications in less time and deliver results you can depend on. In short, it's exactly what you need - calibrator performance at a test tool price.

- Ranges from 1psi to 10,000 psi
- Single or dual range configuration
- Pressure test and maintenance
- Transmitter calibration
- Loop set-up and diagnostics
- Switch testing

IDOS pressure sensors provide 0.05% Full Scale accuracy

mA measure, switch test and 24V loop power

Large backlit display, menu driven interface

HART® loop resistor

Compact, simple to use, easy to carry

Convenient, one-handed operation

Rugged and weatherproof rubberized case

Plug/play connector for IDOS™ measurement modules



GE Druck

DPI 800/802

Pressure Indicator / Loop Calibrator

Pressure Test and Measurement

The **DPI 800 Pressure Indicator** is a compact and complete pressure measurement tool.

Pressure ranges from 1psi to 10,000 psi including vacuum options.

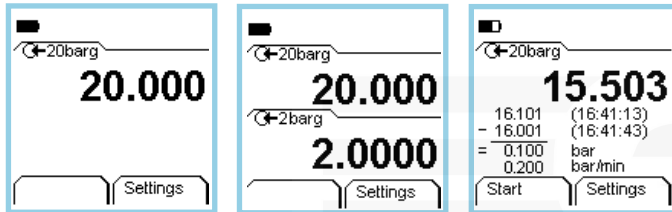
All-inclusive accuracy can be relied on from one year to the next whatever the environmental conditions.

Dual sensor configuration for extended measurement range and simultaneous two channel reading.

Stainless steel sensor construction is available for compatibility with a wide range of fluids and gases.

Programmable leak test reports the pressure drop and leak rate.

Advanced features such as Hold, Max/Min/Avg, Alarm, Scaling and Tare for troubleshooting.



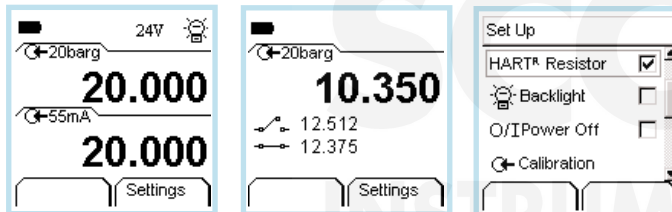
Pressure Instrumentation and Loop Maintenance

DPI 802 pressure loop calibrator provides simultaneous pressure and mA measurement for transmitter and loop maintenance.

24V loop power supply energizes transmitters and control loops.

Automatic switch test captures open/closed trip values providing a fast and highly accurate "safety system" check.

HART® resistor can be switched into the loop when required by a HART® digital communicator.



Flexibility

IDOS™ (Intelligent Digital Output Sensor) measurement modules are available from 1psi to 10,000 psi.

Range expansion is simply achieved by adding modules.

Total flexibility means IDOS™ modules can be used with any compatible instrument.

Plug and Play modules are interchangeable between instruments requiring no set-up or instrument calibration.

Dedicated RTD and Thermocouple models are available in the DPI 800 series.

Please refer to IDOS pressure modules data sheet.

DPI 800 and 802 Specification

Pressure Range	G/D	G	A	Media	Over-pressure	*Accuracy Std	%FS High
±1, 3, 5 psi	✓			Ⓜ Ⓝ		0.075	
5 psi			✓	Ⓜ Ⓝ	2 x FS	0.075	
±10 psi	✓			Ⓜ Ⓝ	2 x FS	0.05	0.01
-15 to 15, -15 to 30 psi	✓			Ⓜ Ⓝ	2 x FS	0.05	0.01
30 psi			✓	Ⓜ Ⓝ	2 x FS	0.05	
-15 to 50, 100, 150 psi		✓		Ⓜ Ⓝ	2 x FS	0.05	0.01
100 psi			✓	Ⓜ Ⓝ	2 x FS	0.05	0.01
300 psi			✓	Ⓜ Ⓝ	2 x FS	0.05	0.01
300, 500, 1000, 1500, 2000, 3000		✓		Ⓜ Ⓝ	2 x FS	0.05	0.01

G/D suitable for gauge/differential use (max line pressure 2 bar calibrated referenced to atmosphere). ⓂStainless steel ⓃNon-corrosive gas/fluid. ⓄNon-corrosive gas.

***Standard Accuracy:** Total accuracy 32° to 122°F and 1 year stability

***High Accuracy (DPI 800P/802P):** Accuracy 64° to 82°F. Stability 0.01% rdg/year.

Single or dual range: One or two internal sensors can be selected from the table above. Note for dual range instruments, G/D ranges will be configured as G (gauge), ranges 5 psi and below not available and only one sensor 1500 psi or above.

Pressure connections: 1/8 NPT female

DPI 802 Only

mA measure: 0 to 55 mA 0.02% rdg ±0.005% FS.

Includes 1 year stability.

24V loop power: +/-10% (35 mA maximum).

Switch detection: Open and closed. 1.0 mA wetting current.

HART® resistor: Menu selectable 247.5 ohm resistor

DPI 800 Series Common Specification

Languages: Chinese, English, French, German, Italian, Japanese Portuguese, Russian and Spanish.

Operating Temperature: 14° to 122°F.

Humidity: 0 to 90% non-condensing (Def Stan 66-31, 8.6 cat III).

Ingress Protection: IP55 dust and splashing water.

Shock and Vibration: EN61010:2001, Def Stan 66-31, 8.4 cat III.

EMC: EN61326-1 :1997 + A1 :1998.

Safety: Electrical EN61010:2001. Pressure directive, class SEP. CE marked

Display: Graphic 2 x 2 inches LCD with backlight. 99999 resolution.

Size and Weight: 7 x 3 1/2 inches, 1.1 lbs.

Batteries: 3 x AA alkaline. > 50 hrs measure. > 10 hrs 24V source.

Options

A) Belt clip, wrist strap/hanging loop and bench stand

B) NiMH batteries with charger: Batteries are charged externally.

Ordering Information

Please state the model number DPI 800 or 802 for standard accuracy and 800P or 802P for high accuracy, pressure range(s) G, A or G/D and options.

Note: Each unit is supplied with batteries, calibration certificate and user guide. The DPI 802 and 802P include a set of electrical test leads.

GE Druck is a world leader in the design and manufacture of pressure, temperature and electrical field calibrators, laboratory and workshop standards and pressure sensors and transmitters.

For more information visit www.druck.com

Representative



Druck Incorporated
4 Dunham Drive, New Fairfield, CT 06812 USA
Tel: 203-746-0400, Fax: 203-746-2494
Email: usa.sales@druck.com
www.druck.com www.pressure.com