

4Sight2

Calibration and Asset Management Software

- 4Sight2 is the next generation calibration and asset management software that provides full visibility of all your assets, reference standards and resources on your plant
- Complete integration with Druck calibration equipment automates field activities & minimises manual intervention without compromising on quality, compliance and data integrity
- Automatic workload scheduling and planning, status tracking, configuration capabilities based on individual needs, track and trace calibrations, historical trending and drift analysis features provide a robust solution to drive process efficiency and time saving.
- Easy to use, simple layout packed with customisation capabilities offer highly flexible and adaptable solution suitable for a wide range of user groups such as technicians, site supervisors, managers spanning across single or multiple sites or geographies.
- Web browser-based design allows you to access data anytime, anywhere eliminating the need for maintaining and managing paper-based records.



Features

Asset and Test Equipment Management

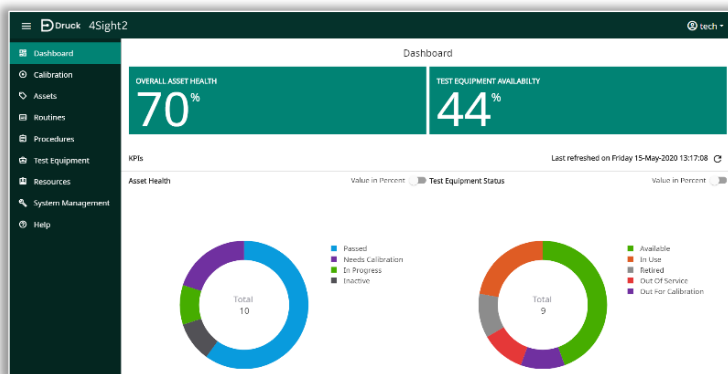
- Create comprehensive asset and test equipment database
- Create comprehensive factory hierarchy (Plant, Location, Tag, Device, Range)
- Hierarchical or tabular visualization of data
- Customisable data grids
- Export data to standard file formats
- Configuration policies

Calibration Management

- Automates calibration when Integrated with the latest Druck workshop or documenting portable pressure, temperature & electrical calibrators
- Manual entry of calibration data
- Uncertainty calculation for added industry standard compliance
- Easy access to calibration history
- Automatic calibration scheduling and workload management

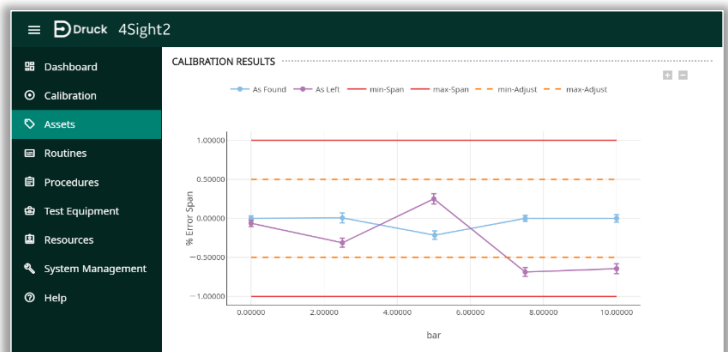
Reporting and analysis

- Customisation calibration certificate service
- Reverse trace report for tracing calibrations associated with a reference standard.
- Historical trending and drift analysis graph for interval analysis and predictive maintenance



- New **Improved look** and **Simplified Navigation**
- Improved Reference Standard **Status Tracking and management**
- **Automatic Calibration workload scheduling**
- Improved **Communications Engine**
- Quick and Easy **Express Installation**
- Integrated with Druck Temperature Calibrator DryTC165/650, LiquidTC165/650 and others

- **Uncertainty Calculation** provides additional confidence for calibration data in accordance with industry standards
- The **Traceability Report** enables speedy investigation of historical calibrations done with a reference standard thereby facilitating corrective actions.

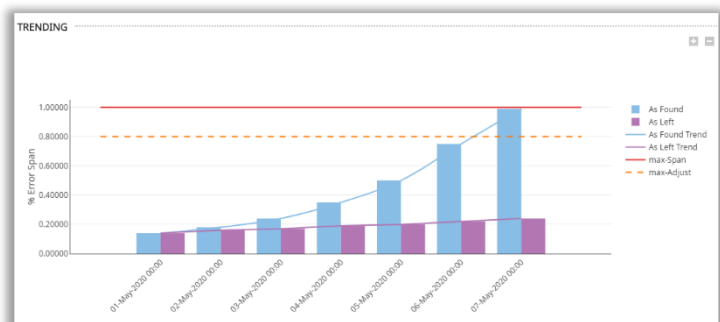


The screenshot shows the 'TEST EQUIPMENT MANAGEMENT' table in the Druck 4Sight2 interface. The table has columns for Equipment Name, Model, Manufacturer, Serial Number, Status, Cal Status, and Calibration Due. The data is as follows:

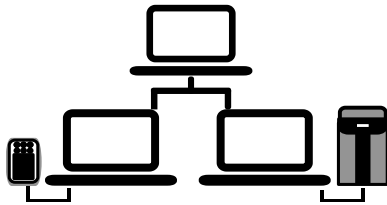
Equipment Name	Model	Manufacturer	Serial Number	Status	Cal Status	Calibration Due
DPH20G	F100	Druck	121345	In Use	On Time	30-Sep-2020
EGM01	Gas Bottle Nitrogen	EGM	123215	In Use	On Time	30-Nov-2020
DPH20G	DPH20G	Druck	3812185	Available	On Time	15-Sep-2020
PACE5000-CH	PACE5000	Druck	105049	Available	N/A	N/A
CM2-11G	PACE CM2-11G (CM2-B-11G)	Druck	425039	Available	Overdue	01-Sep-2017
DPH20G	DPH20G	Druck	5264861	Available	Overdue	30-Jan-2020
DPH20GCopy37	DPH20G	Druck	429407	Out Of Service	On Time	30-Sep-2020
DPH20GCopy38	DPH20G	Druck	254578	Out For Calibration	On Time	30-Sep-2020
DPH20GCopy39	DPH20G	Druck	636759	Retired	On Time	30-Sep-2020
PACE5000-CH	PACE5000	Druck	1014035	Available	N/A	N/A
CM0-07G	PACE CM0-07G (CM0-B-07G)	Druck	1214015	Available	On Time	15-May-2021
DPH20G	DPH20G	Druck	1364054	Available	On Time	14-May-2021
DryTC165	DryTC 165C	Druck	9471547	Available	On Time	15-May-2021

- **Custom View** feature provide the ability to show/hide, sort, re-order and filter tabular data based on your requirement. Once done, you can save the configuration and **Export** the data in standard file format.
- **Customisable Report Service** allows you to create bespoke looking certificates using our brand-new reports engine.
- **User Configurable Policies** allow you to customise key behaviours

- **Improved Visualisation and Data Representation** for better decision making
- **Historical Trending** of drift data for interval analysis and predictive decision making
- Improved **Paperless Experience** while in field.



Minimum System Requirements

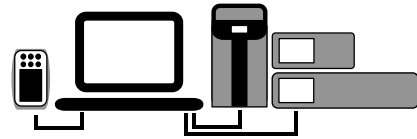


Applications Server

- Windows 10 Anniversary Update (version 1607) or later versions, Windows Server 2012 R2, Windows Server 2016, Windows Server 2019
- All Windows Updates fully installed
- Quad core processor
- 8GB or Greater (32GB Recommended)
- 1 TB disk space or greater

Client Workstation

- Windows 10 Anniversary Update (version 1607) or later versions, Windows Server 2012 R2, Windows Server 2016, Windows Server 2019
- Google Chrome V80+, Microsoft Edge V80, Firefox V74
- Adobe Reader 8.0+
- 4GB or Greater (8GB recommended)



Standalone PC/Installation

- Windows 10 Anniversary Update (version 1607) or later versions, Windows Server 2012 R2, Windows Server 2016, Windows Server 2019
- Google Chrome V80+, Microsoft Edge V80, Firefox V74
- Adobe Reader 8.0
- 16GB or Greater (32 GB recommended)
- Dual Core Processor
- 500 GB or greater disk space

Get your copy of 4Sight2,



Download

1. Visit [4Sight2 Web Page](#)
2. Click **Download Free Trial**
3. Enter contact details
4. Click **Download**



Install

1. Extract package
2. Execute **4Sight2ExpressSetup.exe**



Start Using

**Launch desktop icon
and enjoy.!**

(For best results use
Google Chrome)

For installation queries and other technical support, contact us at, mstechsupport@bakerhughes.com

Flavours and Features

Features	Light	Standard	Advanced
Tags	1000	2000	Unlimited
Users	2	3	5
Manual Calibration	✓	✓	✓
Portable Calibration	✓	✓	✓
Automated Pressure Calibration (PACE)	-	Either	Both
Automated Temperature Calibration (Dry/LiquidTC)	-		
Customisable Data Grids	-	✓	✓
Customisable Calibration Certificate	✓ (1 template)	✓ (2 template)	✓ (5 template)
Customisable Policies	-	✓	✓
Trend Graph / Drift Graph	-	✓	✓
Drift Graph in Calibration Certificate	-	✓	✓
Reports	-	✓	✓
Uncertainty Calculation	-	✓	✓

Part Numbers

Part Numbers	Description
4SIGHT2-LIT	Light license, see above for full specifications
4SIGHT2-STD	Standard license, see above for full specifications
4SIGHT2-ADV	Advanced license, see above for full specifications
4SIGHT2-ADDT	Additional 1000 tags
4SIGHT2-ADDU	Additional ONE user license
4SIGHT2-UNLIM-TAGS	Unlimited tags license
4SIGHT2-DATA-MIG	Data migration (daily rate for application engineer)
4SIGHT2-REP-TEM	Additional ONE Customised Calibration Certificate
4SIGHT2-MAIN-ADHOC	Ad-hoc hourly maintenance (daily rate for application engineer)
4SIGHT2-TRAIN-STD	Standard Training Package (daily rate for application engineer)
4SIGHT2-TL-EXTRA	Travel & living expenses for on-site visits



Order Now

Request a quotation and state the quotation number when ordering.

Advise your requirements as follows:

1. Flavour Type [Lite / Standard / Advanced]
2. Any extra add-ons such as Trainings, Additional Users, Tags etc.

For more information please visit our website: druck.com, or contact your local Druck sales representative

Related Products

Process Calibrators

We offer a comprehensive range of portable pressure, temperature and electrical field calibrators. To help you select the right process calibration tools we have categorised our products into three ranges:

- The **Essential** range provides rugged, accurate and easy-to-use test and calibration tools.
- The **Expert** range introduces higher accuracy and more functionality
- The **Elite** range provides a modular system offering state-of-the-art multifunction communication and calibration



Laboratory and Workshop Instruments

Our PACE Series offers a comprehensive range of pressure controllers and indicators.

Our Dry/Liquid temperature calibrator range offers a high accuracy solution to temperature calibration measurement.



Pressure Transducers and Transmitters

We offer a wide range of pressure transducers and transmitters including analog, digital and HART/Smart devices. Please contact Druck for further information.

4Sight2

Simple, scalable, and smart
Calibration and asset
management software that
works for you



EMEA

sensing.grobycc@bakerhughes.com

Americas

CCpressureUSA@bakerhughes.com

Australia

custcare.au@bakerhughes.com

Rest of the World

sensing.grobycc@bakerhughes.com

Baker Hughes 

Copyright 2020 Druck, Baker Hughes Business. This material contains one or more registered trademark of Baker Hughes Company and its subsidiaries in one or more countries. All third-party product and company names are trademarks of their respective holders.

920-556A